

小鼠抗 MMP2 单克隆抗体

中文名称： 小鼠抗 MMP2 单克隆抗体

英文名称： Anti-MMP2 mouse monoclonal antibody

别名： CLG4; CLG4A; MMP-2; MMP-II; MONA; TBE-1

相关类别： 一抗

储存： 冷冻（-20℃） 避光

宿主： Mouse

抗原： MMP2

反应种属： Human

标记物： Unconjugate

克隆类型： mouse monoclonal

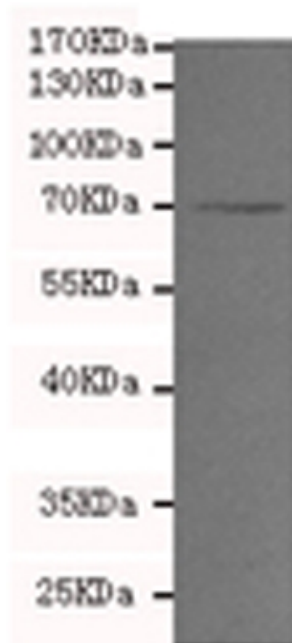
技术规格

Background:

Proteins of the matrix metalloproteinase (MMP) family are involved in the breakdown of extracellular matrix in normal physiological processes, such as embryonic development, reproduction, and tissue remodeling, as well as in disease processes, such as arthritis and metastasis. Most MMP's are secreted as inactive proproteins which are activated when cleaved by extracellular proteinases. This gene encodes an enzyme which degrades type IV collagen, the major structural component of basement membranes. The enzyme plays a role in endometrial menstrual breakdown, regulation of vascularization and the inflammatory response. Mutations in this gene have been associated with Winchester syndrome and Nodulosis-Arthropathy-Osteolysis (NAO) syndrome. Two transcript

	variants encoding different isoforms have been found for this gene. [provided by RefSeq, Jul 2008].
Applications:	WB
Name of antibody:	MMP2
Immunogen:	Fusion protein of human MMP2
Full name:	matrix metalloproteinase 2 (MMP2), transcript variant 1
Synonyms:	CLG4; CLG4A; MMP-2; MMP-II; MONA; TBE-1
SwissProt:	P08253
WB Predicted band size:	74 kDa
WB Positive control:	HepG2, SVT2, Jurkat, MCF-7 cell lysates
WB Recommended dilution:	500-2000

M



MMP2

